

# isolated Predictive People Analytics

Goodbye Reports. Hello Insights.

Meet the isolated Predictive People Analytics platform providing organizations the ability to generate predictive analytics by unifying and trending metrics from multiple HR software applications.

The analytics platform empowers an organization to firmly establish the links of critical events and evolving corporate metrics, such as productivity and turnover, and ultimately close the loop on how people strategies impact business results.



## Insights made easy:



A system that is **easy to use**

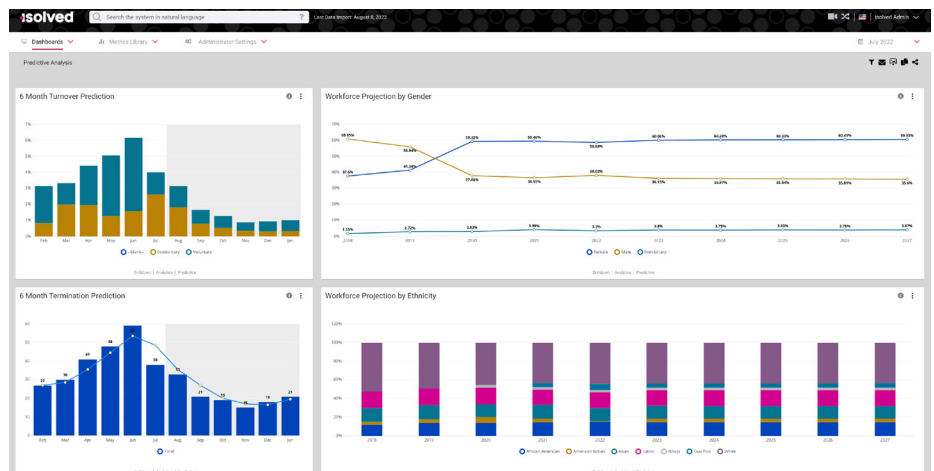


Data that is **easy to import**



Analytics that are **easy to understand**

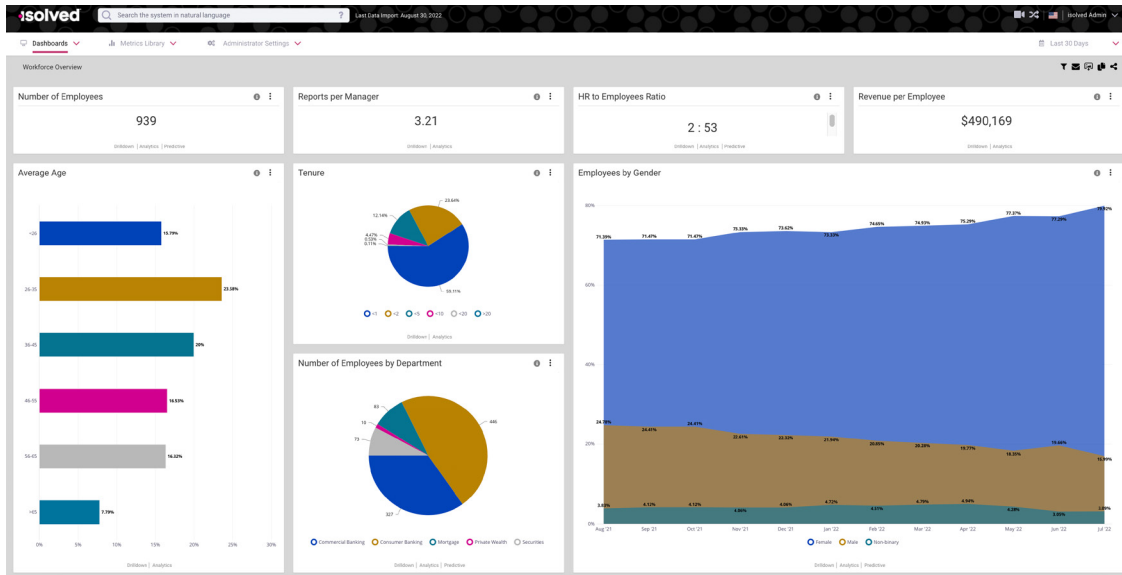
isolated Predictive People Analytics is a powerful tool that ensures your operations continue to run at peak efficiency. As a result, managers will be able to identify and address small issues before they have an opportunity to grow into large problems. These comprehensive analytics provide historical trending and predictive modeling so an organization can see how it got to where it is, and what needs to be done for a more productive tomorrow.



## Analyze

Our analytics will illustrate where you are today and your potential opportunities to sink or grow. With this platform, you can get an overview of trends to understand why they are happening.

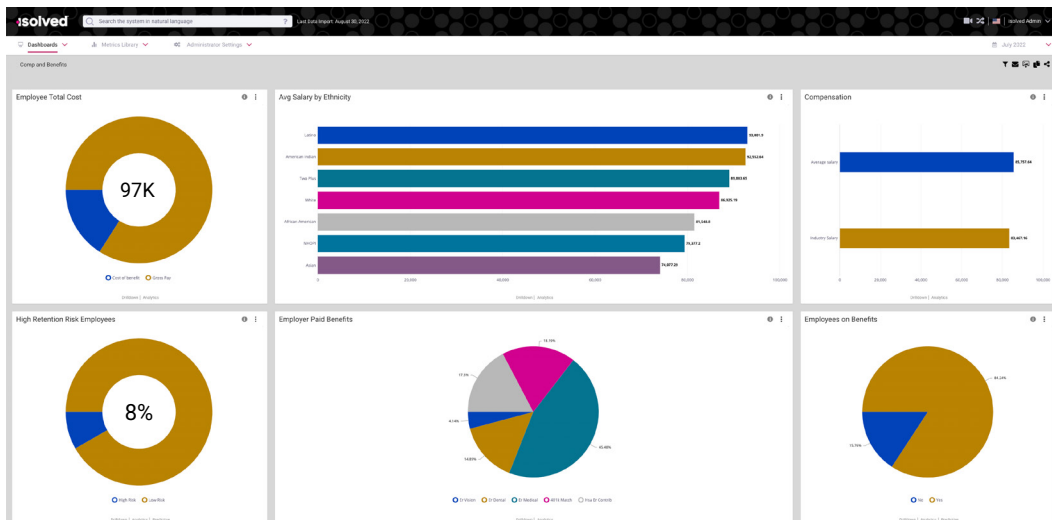
Through multiple chart types, you can view employee data such as average commuting distance, average last raise, and average time in a position in a simplified view, as well as compare your employees' work habits and performance to determine your organization's risk of turnover and opportunity for development.



## Predict

Once you know why things are happening, you can plan and course correct for a better future. Predictive People Analytics provides the ability to investigate the future and predict optimal ways to reduce turnover and increase profitability.

Using the system's workforce planning modules and streamlined design of filters and controls, you can determine the best path to success. When coupled with isolved People Cloud's data, the platform can provide managers comprehensive benchmark analytics to help them source and secure talent, with attrition prediction assistance to help with succession planning and can evaluate and carry out skill-to-need matchmaking to help ensure the right talent is recruited.



isolved Predictive People Analytics provides a simple and elegant solution that allows the collection of data, production of relevant metrics, and the trending to analytics that will dictate action. The intuitive interface is designed for no-stress use. Metrics are instantly visible on multiple dashboards, while navigation to analytics, drilldowns, and modeling are never more than two clicks away. There is no complex report building or extensive training required.



**Voice Navigation & Visual Assistant** - Access to a seamless and powerful voice navigation via a virtual assistant so that HR professionals and employees need to simply to “ask for” the information they want to see.



**Dashboards** - Configurable views of all key people metrics centralized or segmented into user defined groupings that don't require experts to interpret data.



**Historical Trend Analysis** - Trend all key metrics over user defined time periods.



**Key Events Overlay** - Correlate key events over trend analysis to better understand what happened and the effects.



**Predictive Modeling** - Use trended data to plot scenarios that can help decide what actions are best for the business and the workforce.



**NLP (Natural Language Processing)** - As applications have become more robust, the complexity in navigating to desired data points and creating the optimum views of that information has also increased.

#### Get access to:

- Better visibility and insights to plan people decisions
- Ability to incorporate HR, Finance, and Benchmarking data sources
- Centralized metric and analytics dashboards for one-stop action
- Trending, Insights, and Predictive Modeling for Prescriptive Analytics solutions
- Easy and more complete understanding of HR and People data
- Actionable insights and justification from human resources to C-Suite
- Predictive view into the future of workforce and necessary actions

Let's get you started with **isolved Predictive People Analytics** to analyze the trends, predict your options to reduce turnover and increase profitability.

Contact us [www.selecthcm.com](http://www.selecthcm.com) or **760.487.8064** to learn more.

*Transforming employee experience for a better today and a better tomorrow.*